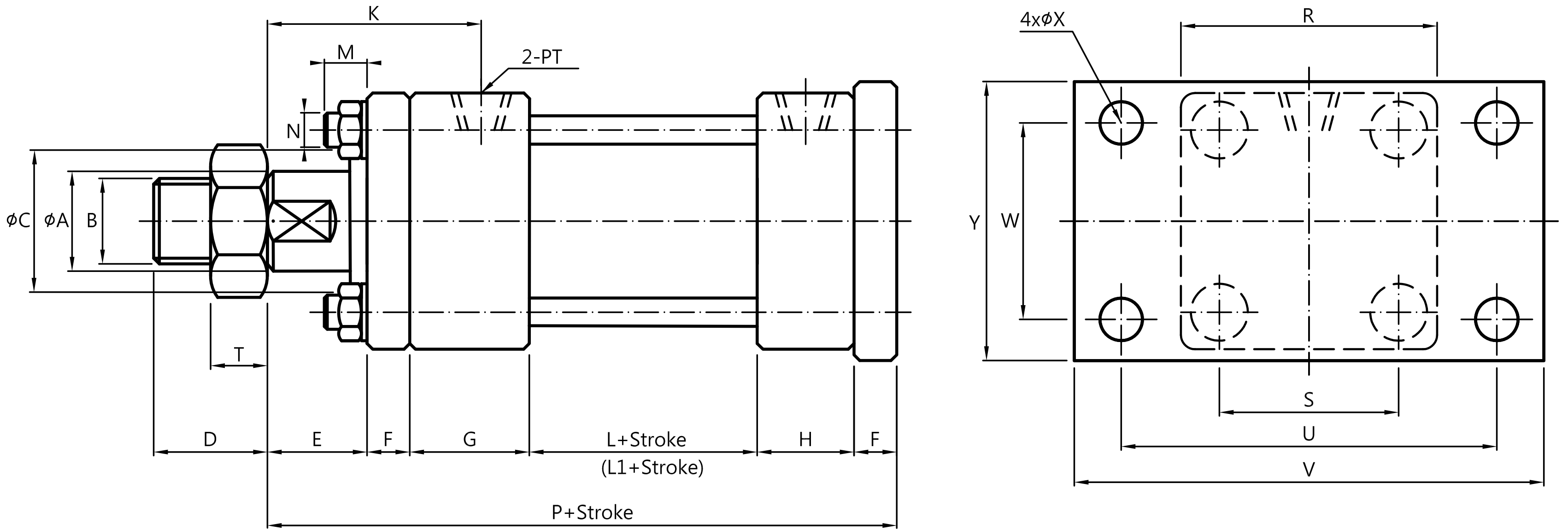
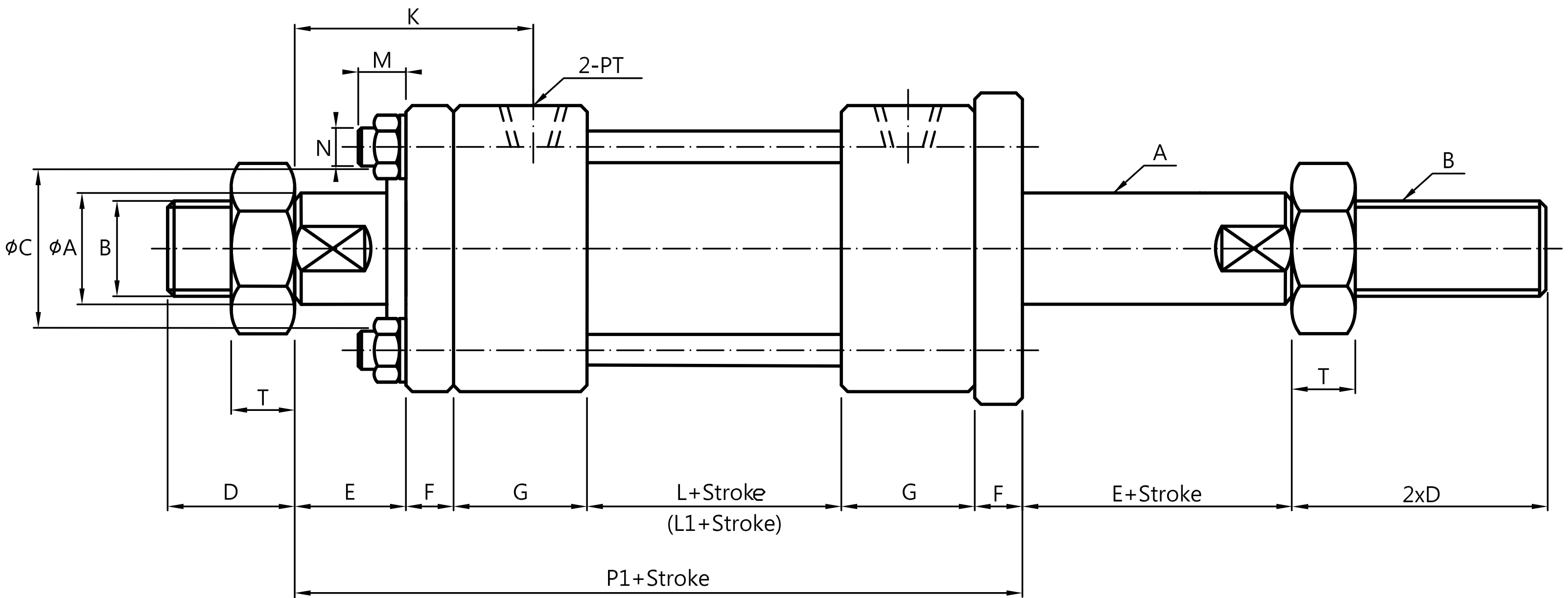


# OJ FB Type I



# OJ FB Type II



註記：L1感應式油壓缸基本長度

Note: Basic length of L1 induction hydraulic cylinder

缸徑 Bore dia.	活塞桿 Rod series.	本體尺寸 Main body size & 按裝相關尺寸 Mounting dimension & 感應式油壓缸																							
		$\phi A$	B	$\phi C$	D	E	F	G	H	K	L	L1	M	N	P	P1	PT	R	S	U	V	W	$\phi X$	Y	T
Ø40	C	20	M18P1.5	35	25	20	11	36	26	54	50	55	13	M10P1.5	154	164	1/4"	65	45	95	118	46	11	69	15
	B	25	M22P1.5	40	30	20	11	36	26	54	50	55	13	M10P1.5	154	164	1/4"	65	45	95	118	46	11	69	17
Ø50	C	25	M22P1.5	40	30	30	13	42	34	70	50	55	13	M10P1.5	182	190	3/8"	75	52	115	145	58	13	85	17
	B	30	M26P1.5	45	35	30	13	42	34	70	50	55	13	M10P1.5	182	190	3/8"	75	52	115	145	58	13	85	18
Ø63	C	30	M26P1.5	45	35	35	15	42	34	77	50	55	15	M12P1.75	191	199	3/8"	90	63	132	165	69	15	98	18
	B	35	M30P1.5	50	40	35	15	42	34	77	50	55	15	M12P1.75	191	199	3/8"	90	63	132	165	69	15	98	20
Ø80	C	35	M30P1.5	50	40	35	18	46	40	79	50	60	17	M16P1.5	207	213	1/2"	110	80	155	190	87	18	118	20
	B	40	M35P1.5	55	45	35	18	46	40	79	50	60	17	M16P1.5	207	213	1/2"	110	80	155	190	87	18	118	20
Ø100	C	45	M40P1.5	60	45	40	20	50	40	90	69	74	19	M18P1.5	239	249	1/2"	135	98	185	224	109	20	145	20
	B	50	M45P1.5	65	55	40	20	50	40	90	69	74	19	M18P1.5	239	249	1/2"	135	98	185	224	109	20	145	20
Ø125	C	50	M45P1.5	65	55	45	24	58	48	104	69	74	21	M22P1.5	268	278	3/4"	165	122	224	272	132	24	175	20
	B	60	M50P2.0	75	65	45	24	58	48	104	69	74	21	M22P1.5	268	278	3/4"	165	122	224	272	132	24	175	20
Ø150	C	60	M50P2.0	75	60	50	28	58	48	113	69	74	23	M24P1.5	281	291	3/4"	195	148	265	315	155	28	206	20
	B	70	M60P2.0	85	80	50	28	58	48	113	69	74	23	M24P1.5	281	291	3/4"	195	148	265	315	155	28	206	20
Ø180	C	70	M60P2.0	85	110	55	33	68	58	127	90	90	25	M30P1.5	337	347	1"	235	182	315	375	185	33	243	20
	B	80	M70P2.0	100	140	55	33	68	58	127	90	90	25	M30P1.5	337	347	1"	235	182	315	375	185	33	243	20
Ø200	C	80	M70P2.0	100	120	55	37	68	58	137	90	90	27	M32P2.0	345	355	1"	262	200	355	425	206	36	272	20
	B	100	M90P2.0	120	150	55	37	68	58	137	90	90	27	M32P2.0	345	355	1"	262	200	355	425	206	36	272	20
Ø224	C	100	M90P2.0	120	140	60	41	68	58	146	90	90	29	M32P2.0	358	368	1"	292	225	395	475	230	42	310	20
	B	110	M100P2.0	130	180	60	41	68	58	146	90	90	29	M32P2.0	358	368	1"	292	225	395	475	230	42	310	20
Ø250	C	110	M100P2.0	130	150	65	46	68	58	169	90	90	31	M38P2.0	373	383	1 1/4"	325	250	425	515	250	45	335	20
	B	125	M110P2.0	145	195	65	46	68	58	169	90	90	31	M38P2.0	373	383	1 1/4"	325	250	425	515	250	45	335	20