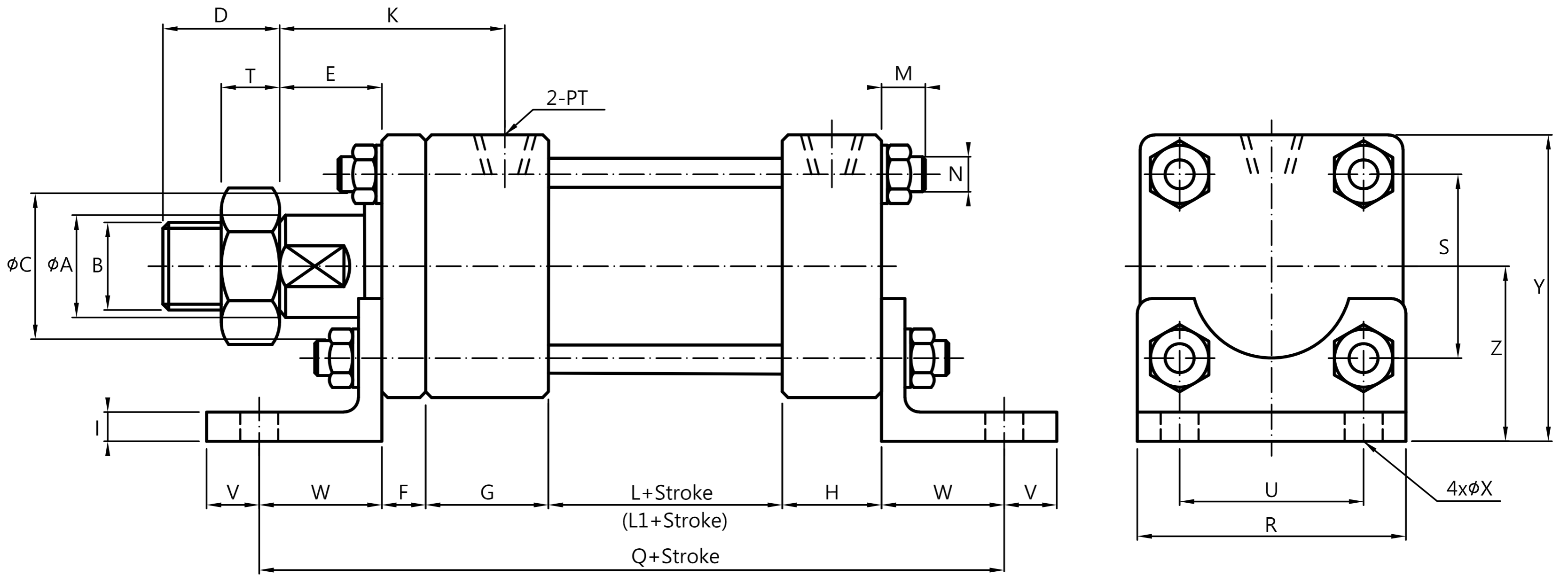
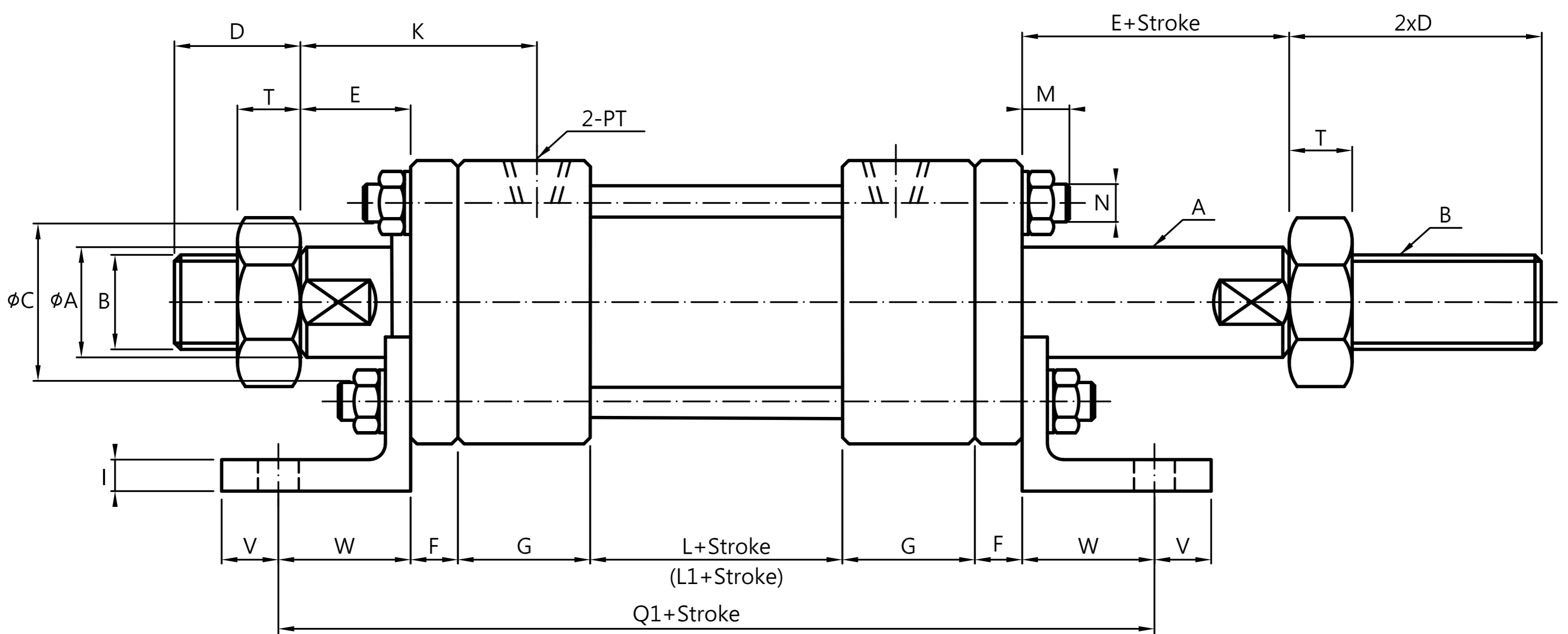


OJ LB Type I



OJ LB Type II



註記：L1感應式油壓缸基本長度

Note: Basic length of L1 induction hydraulic cylinder

缸徑 Bore dia.	活塞桿 Rod series.	本體尺寸 Main body size & 安裝相關尺寸 Mounting dimension																									
		ØA	B	ØC	D	E	F	G	H	K	L	L1	M	N	PT	Q	Q1	R	S	I	U	V	W	ØX	Y	Z	T
Ø40	C	20	M18P1.5	35	25	20	11	36	26	54	50	55	13	M10P1.5	1/4"	187	197	65	45	8	45	13	32	11	75.5	43	15
	B	25	M22P1.5	40	30	30	13	42	34	70	50	55	13	M10P1.5	3/8"	209	230	75	52	8	52	15	35	13	87.5	50	17
Ø50	C	25	M22P1.5	40	30	30	13	42	34	70	50	55	13	M10P1.5	3/8"	209	230	75	52	8	52	15	35	13	87.5	50	17
	B	30	M26P1.5	45	35	35	15	42	34	77	50	55	15	M12P1.75	3/8"	225	248	90	63	10	63	18	42	15	105	60	18
Ø63	C	30	M26P1.5	45	35	35	15	42	34	77	50	55	15	M12P1.75	3/8"	225	248	90	63	10	63	18	42	15	105	60	18
	B	35	M30P1.5	50	40	35	18	46	40	79	50	60	17	M16P1.5	1/2"	254	278	110	80	12	80	20	50	18	127	72	20
Ø80	C	35	M30P1.5	50	40	35	18	46	40	79	50	60	17	M16P1.5	1/2"	254	278	110	80	12	80	20	50	18	127	72	20
	B	40	M35P1.5	55	45	40	20	50	40	90	69	74	19	M18P1.5	1/2"	289	319	135	98	12	98	23	55	20	152.5	85	20
Ø100	C	45	M40P1.5	60	45	40	20	50	40	90	69	74	19	M18P1.5	1/2"	289	319	135	98	12	98	23	55	20	152.5	85	20
	B	50	M45P1.5	65	55	40	24	58	48	104	69	74	21	M22P1.5	3/4"	331	365	165	122	15	122	29	66	24	187.5	105	20
Ø125	C	50	M45P1.5	65	55	45	24	58	48	104	69	74	21	M22P1.5	3/4"	331	365	165	122	15	122	29	66	24	187.5	105	20
	B	60	M50P2.0	75	60	50	28	58	48	113	69	74	23	M24P1.5	3/4"	353	391	195	148	18	148	30	75	28	211	123	20
Ø150	C	60	M50P2.0	75	60	50	28	58	48	113	69	74	23	M24P1.5	3/4"	353	391	195	148	18	148	30	75	28	211	123	20
	B	70	M60P2.0	85	70	55	33	68	58	127	90	90	25	M30P1.5	1"	419	462	235	182	20	182	40	85	33	265.5	148	20
Ø180	C	70	M60P2.0	85	70	55	33	68	58	127	90	90	25	M30P1.5	1"	419	462	235	182	20	182	40	85	33	265.5	148	20
	B	80	M70P2.0	100	80	55	37	68	58	137	90	90	27	M32P2.0	1"	449	496	262	200	25	200	40	98	36	296	165	20
Ø200	C	80	M70P2.0	100	80	55	37	68	58	137	90	90	27	M32P2.0	1"	449	496	262	200	25	200	40	98	36	296	165	20
	B	100	M90P2.0	120	100	60	41	68	58	146	90	90	29	M32P2.0	1"	487	538	292	225	30	225	45	115	41	331	185	20
Ø224	C	100	M90P2.0	120	100	60	41	68	58	146	90	90	29	M32P2.0	1"	487	538	292	225	30	225	45	115	41	331	185	20
	B	110	M100P2.0	130	110	65	46	68	58	169	90	90	31	M38P2.0	1 1/4"	522	578	325	250	35	250	50	130	46	370.5	208	20
Ø250	C	110	M100P2.0	130	110	65	46	68	58	169	90	90	31	M38P2.0	1 1/4"	522	578	325	250	35	250	50	130	46	370.5	208	20
	B	125	M110P2.0	145	125	65	46	68	58	169	90	90	31	M38P2.0	1 1/4"	522	578	325	250	35	250	50	130	46	370.5	208	20