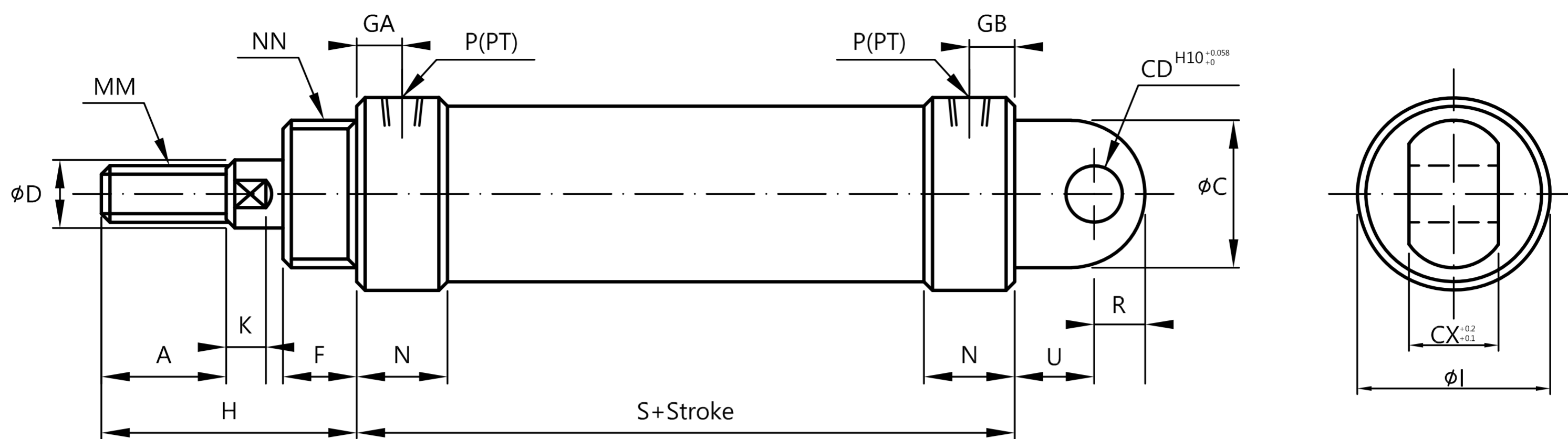


CMCA Type 吊耳型



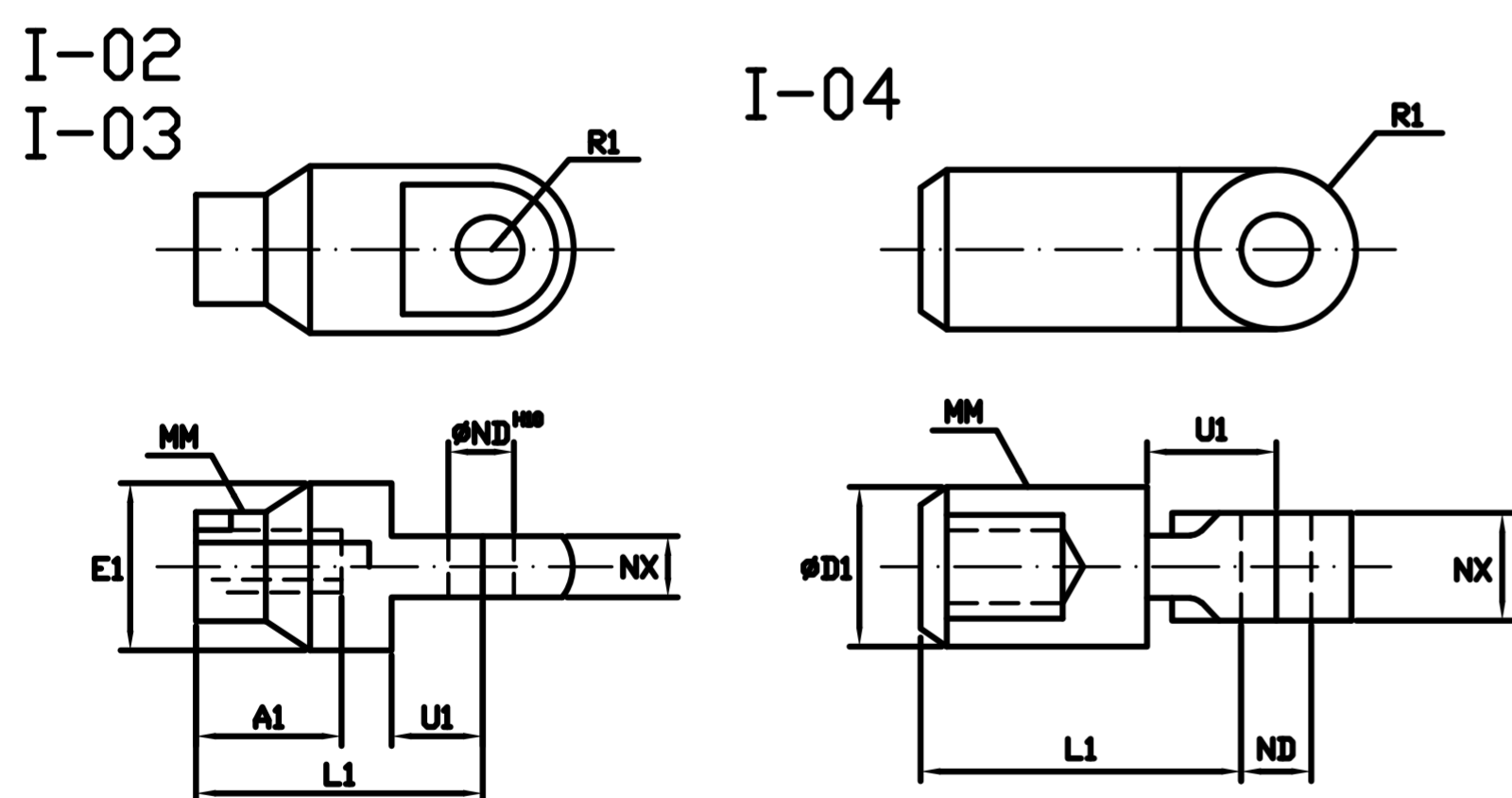
複動 Double Acting

缸徑 Bore dia.	行程範圍 Stroke range	A	ØD	F	GA	GB	ØI	K	MM	N	ØC	NN	P PT	S	U	ØCD	CX	R	H
Ø20	-300	18	10	13	8	8	28	5	M8×1.25	16	20	M20×1.5	1/8"	68	14	8	10	9	41
Ø25	-300	22	12	13	8	8	34	7	M10×1.25	16	26	M26×1.5	1/8"	68	14	10	10	9	45
Ø30	-300	22	12	13	8	8	38	7	M10×1.25	16	26	M26×1.5	1/8"	68	14	10	10	9	45
Ø40	-300	24	16	16	11	11	50	8	M12×1.25	22	32	M32×2.0	1/4"	89	18	12	15	11	50

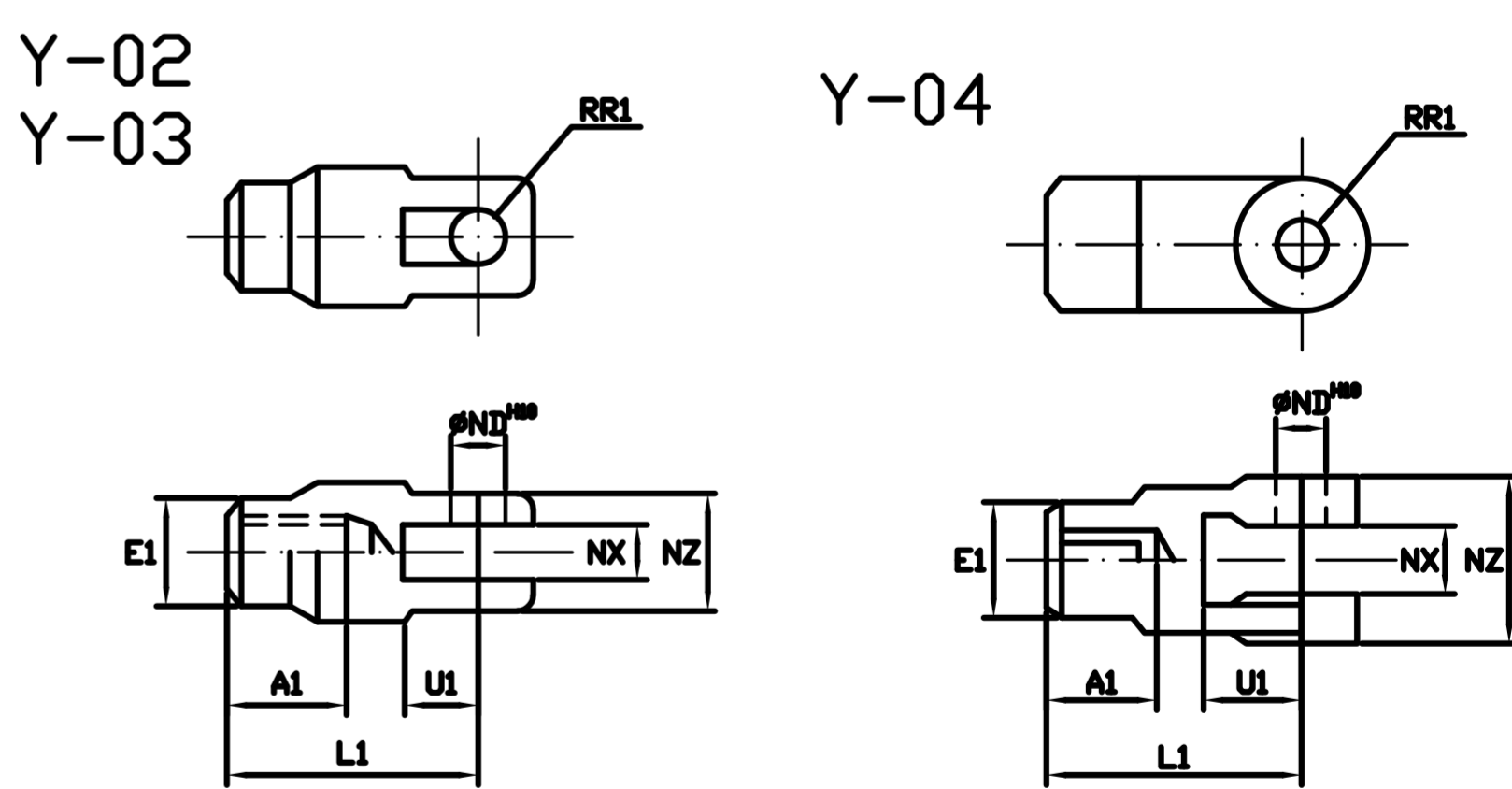
單動 Single Acting

缸徑 Bore dia.	行程範圍 Stroke range	A	ØD	F	GB	ØI	K	MM	N	ØC	NN	P	S					U	ØCD	CX	H	
													25	50	75	100	125					150
Ø20	-75	18	10	13	8	28	5	M8×1.25	16	20	M20×1.5	1/8"	85	108	129	-	-	-	14	9	10	41
Ø25	-75	22	12	13	8	34	7	M10×1.25	16	26	M26×1.5	1/8"	85	98	120	-	-	-	14	9	10	45
Ø30	-100	22	12	13	8	38	7	M10×1.25	16	26	M26×1.5	1/8"	88	105	124	150	-	-	14	9	10	45
Ø40	-150	24	16	16	11	50	8	M12×1.25	22	32	M32×2.0	1/4"	99	124	139	153	174	-191	18	10	15	50

I 接頭(I Adapter)



Y 接頭(Y Adapter)



型式 Model	缸徑 Bore dia.	A1	ØD1	L1	MM	R1	E1	ND ^{H10}	NX
I-02	Ø20	16	20	36	M8x1.25	10	14	9 ^{+0.058} ₀	9 ^{-0.1} _{-0.3}
I-03	Ø25-30	18	20	38	M10x1.25	10	14	9 ^{+0.058} ₀	9 ^{-0.1} _{-0.3}
I-04	Ø40	22	28	55	M12x1.25	14	20	12 ^{+0.070} ₀	16 ^{-0.1} _{-0.3}

型式 Model	缸徑 Bore dia.	A1	ØE1	L1	MM	RR1	U1	ND ^{H10}	NX	NZ
Y-02	Ø20	16	20	36	M8x1.25	12	14	9 ^{+0.058} ₀	9	18
Y-03	Ø25-30	18	20	38	M10x1.25	12	14	9 ^{+0.058} ₀	9	18
Y-04	Ø40	22	28	55	M12x1.25	14	20	12 ^{+0.070} ₀	16	44