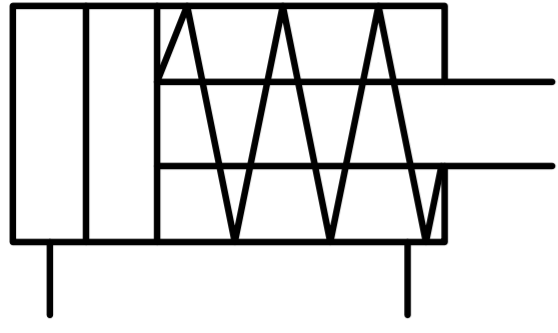
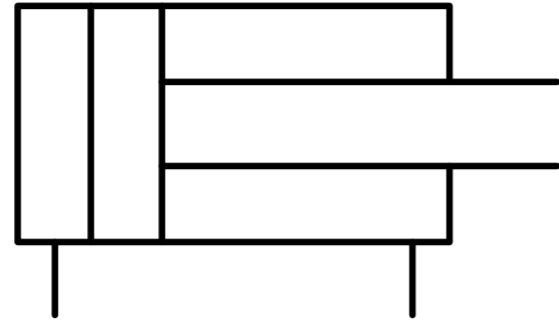


CM Series Mini Cylinder

Dia. : Ø20 · Ø25 · Ø30 · Ø40



單動
Single Acting



複動
Double Acting

特性說明：

- 1.採用鋁金管(Cylinder tube)內表面經過陽極處理，
活塞壽命高。
- 2.前後氣缸蓋採用鋁製，重量輕。
- 3.CNS加工製造，精度高。

DESIGN FEATURES

- *Hard anodized aluminum cylinder tube resists corrosion and abrasion. With 20 micron hard aluminum oxide film providing minimum friction and assuring long seal life.
- *Major parts employ aluminum alloy so are light weight, rust proof, miniaturized with low piston inertia.
- *Employs oil-filled sintered bronze bushing which self-lubricates the piston rod during each stroke.
- *Unified design, most parts of each type are interchangeable among each other.
- *CNC machined parts ensure high precision, excellent workmanship, and good interchangeability.

動作 Acting	缸徑 Size	標準行程/Standard Stroke(mm)												
		25	50	75	100	125	150	175	200	250	300			
複動 Double Acting	Ø20													
	Ø25													
	Ø30													
	Ø40													
單動 Single Acting	Ø20													
	Ø25													
	Ø30													
	Ø40													

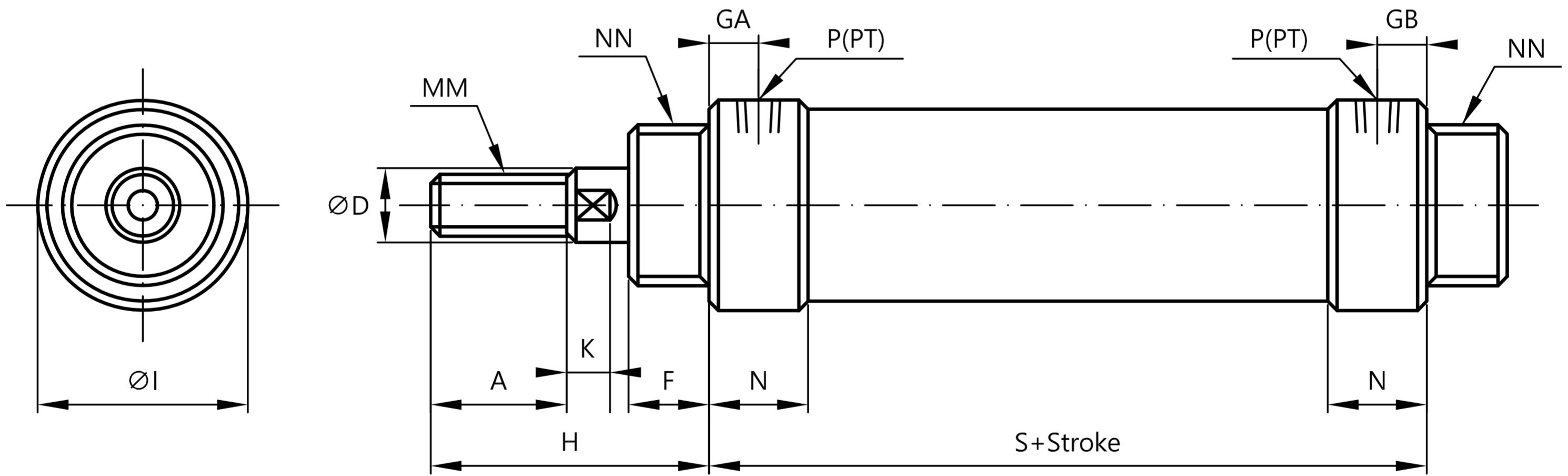
註：1.著色者為標準行程。

2.特殊行程，歡迎洽詢訂購。

Remarks : 1.The shadow is represented the standard stroke.

2.Special stroke available on request.

🔧 CMSD Type 基本型



複動 Double Acting

缸徑 Bore dia.	行程範圍 Stroke range	A	ØD	F	GA	GB	ØI	K	MM	N	NN	P	S	H
Ø20	-200	18	10	13	8	8	28	5	M8×1.25	16	M20×1.5	1/8"	68	41
Ø25	-300	22	12	13	8	8	34	7	M10×1.25	16	M26×1.5	1/8"	68	45
Ø30	-300	22	12	13	8	8	38	7	M10×1.25	16	M26×1.5	1/8"	68	45
Ø40	-300	24	16	16	11	11	50	8	M12×1.25	22	M32×2.0	1/4"	89	50

單動 Single Acting

缸徑 Bore dia.	行程範圍 Stroke range	A	ØD	F	GA	GB	ØI	K	MM	N	NN	P	S				H
													25	50	75	100	
Ø20	-100	18	10	13	8	8	28	5	M8×1.25	16	M20×1.5	1/8"	85	103	127	-	41
Ø25	-100	22	12	13	8	8	34	7	M10×1.25	16	M26×1.5	1/8"	85	98	120	-	45
Ø30	-100	22	12	13	8	8	38	7	M10×1.25	16	M26×1.5	1/8"	88	105	124	150	45
Ø40	-100	24	16	16	11	11	50	8	M12×1.25	22	M32×2.0	1/4"	99	124	137	153	50